



Estd. 1966

B.D.M. INTERNATIONAL PARENT ORIENTATION PROGRAMME CLASS XI SESSION 2024-25

WARM WELCOME TO ALL STUDENTS AND PARENTS!



Ms. Madhumita Sengupta, Principal

With over 24 years of collective experience as a Senior Teacher, Leadership team member and Principal at different reputed schools, Ms. Madhumita Sengupta has also been a mentor Principal under the CBSE, Army Welfare Education Society and also an observer/ Inspector of National Institute of Open Schooling. Ms. Sengupta aspires to build creativity, critical thinking and compassion as necessary skills among students within a secure and joyful learning environment of school.



Ms. Ranjita Sharma, Senior Coordinator

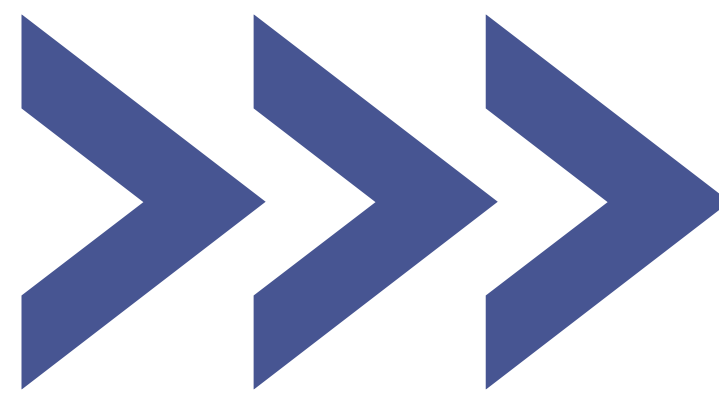
Ms. Ranjita Sharma is a highly enthusiastic, self-directed, and innovative academic leader with a keen interest in handling support operations to foster students' cognitive and social growth. She has an experience of 20 years in reputed CBSE schools of the country. She has been a senior PGT, a Vice Principal, Dean of Activities and the Head Examiner for both AISSE & AISSCE for several years.



Ms. Molly Basu, Asst. Coordinator, Senior Secondary

She has an experience of 27 years of teaching in B.D.M. International as a senior PGT and HOD of the dept. of English. She is dedicated to the holistic growth and development of students of the school and make them shine in the global scenario.



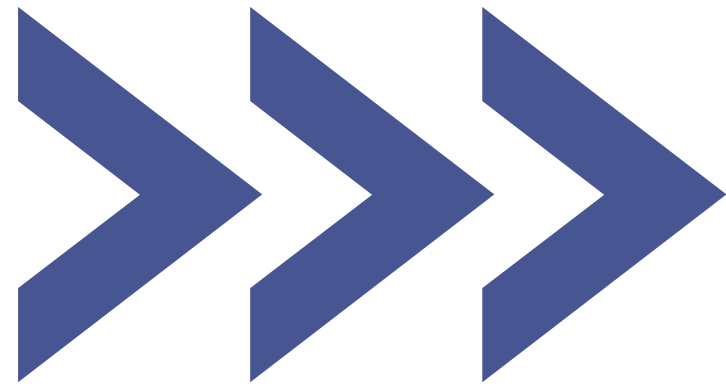


SCHEME OF STUDIES

SCIENCE

- 1) English Core, Bengali/Hindi Core/Physical Education, Physics, Chemistry, Mathematics, Computer Science
- 2) English Core, Bengali/Hindi Core/Physical Education, Physics, Chemistry, Mathematics, Biology
- 3) English Core, Bengali/Hindi Core/Physical Education, Physics, Chemistry, Mathematics, Biotechnology/ Economics
- 4) English Core, Bengali/Hindi Core/Physical Education, Physics, Chemistry, Biotechnology, Psychology/ Economics
- 5) English Core, Bengali/Hindi Core/Physical Education, Physics, Chemistry, Biology, Psychology



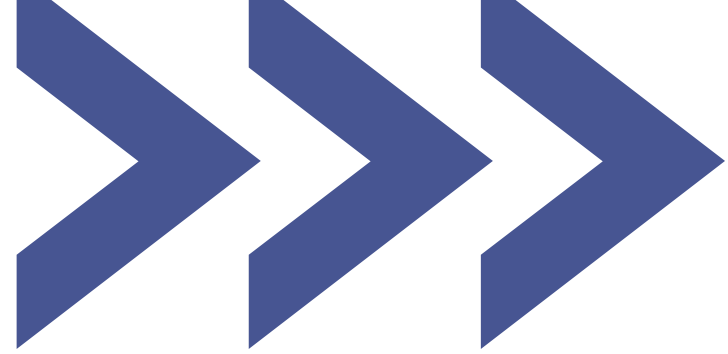


SCHEME OF STUDIES

HUMANITIES

- **English Core, Bengali/Hindi Core/Painting, Political Science, Geography/Psychology, Sociology/Economics, Mathematics/ Applied Mathematics/ History/ Mass Media Studies / Legal Studies.**



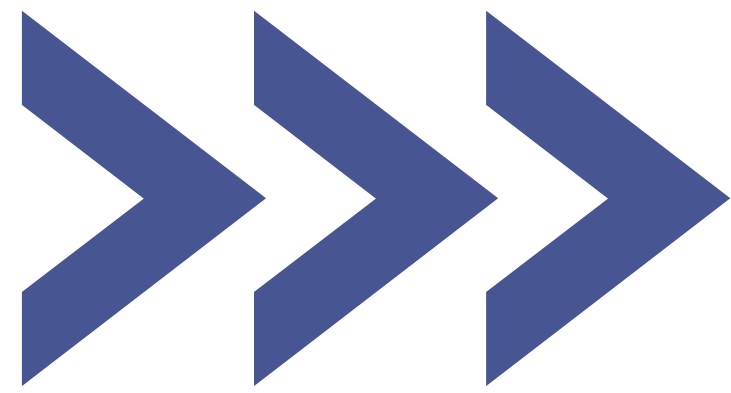


SCHEME OF STUDIES

COMMERCE GENERAL

- 1) English Core, Bengali/Hindi Core/Painting, Accountancy, Business Studies, Economics, Mathematics /Applied Mathematics
- 2) English Core, Bengali/Hindi Core/Physical Education, Accountancy, Business Studies, Legal Studies, Entrepreneurship
- 3) English Core, Bengali/Hindi Core/Painting, Accountancy, Business Studies, Informatics Practices, Entrepreneurship
- 4) English Core, Bengali/Hindi Core/Painting, Accountancy, Business Studies, Cost Accounting, Legal Studies





SCHEME OF STUDIES

JOB ORIENTED VOCATIONAL COURSE

- **English Core, Financial Markets Management, Banking, Accountancy/ Cost Accounting, Business Studies / Economics, Entrepreneurship/ Mathematics/ Applied Mathematics/ Legal Studies.**





Estd. 1966

THINGS TO KEEP IN MIND...



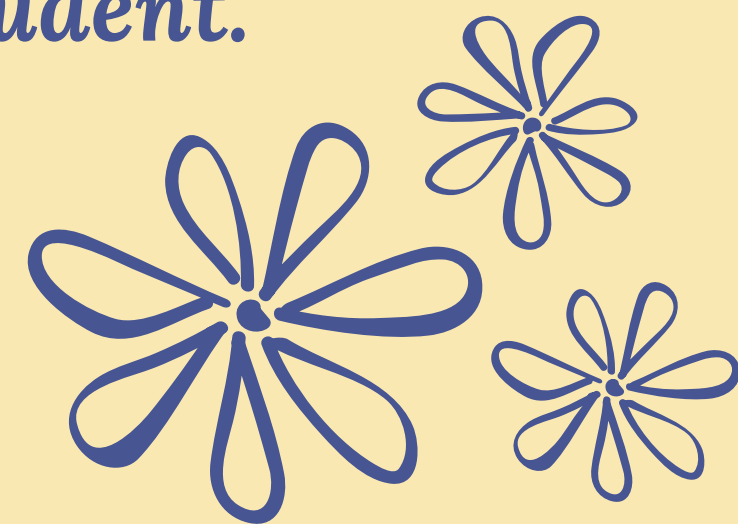
- **Attendance Criteria:**

It is compulsory for all students to maintain regular attendance during the course of the academic session. As per CBSE norms, 75% attendance is mandatory to enable them to appear for the Final Assessment/Board Exam.

- **Promotion Criteria: As per CBSE Norms**

- *No student will be allowed to attend the class without a leave application if he / she has been absent the previous day.*
- *Leave taken on medical grounds must be substantiated with a medical certificate from a registered medical practitioner along with an application from the parent.*
- *All students should attend school on the closing and reopening day before and after every vacation.*
- *Provision of half day leave is not granted, but in an emergency, request may be considered (substantiated by a valid document). Any type of leave will however be granted through an application from the parent/guardian.*
- *Student suffering from any medical conditions, particularly from any contagious disease will not be allowed to attend classes until he or she recovers fully and submits a fitness certificate given by a registered medical practitioner.*

- **Students must come to school in proper school uniform with tie, belt and ID card regularly.**
- **Shoes should be polished.**
- **Girls and boys should be in proper hair cut. No hair styling should be done.**
- **Girls having shoulder length hair will make two ponytails and girls having hair below shoulder length should make two plaits.**
- **Only black hairband/ hairpin/ rubber bands are allowed.**
- **Students should cut their nails timely and NO nail paints, mehendi and tattoo are allowed.**
- **Books and notebooks should be covered and labelled properly with marker pen.**
- **Books to be brought as per Timetable.**
- **Please follow the school Almanac for further 'code of conduct' of student.**



- *Students should follow the disciplinary norms of the school.*
- *The students should converse in English inside the school premises. Speaking in vernacular is strictly prohibited.*
- *Every student should take proper care of school property and damaging or disfiguring of any school property is strictly prohibited or may lead to disciplinary action.*
- *Students should refrain from bringing expensive items or other valuables in school. They should take care of their belongings and money should not be lent or borrowed. The school will not be responsible for the goods lost. **NO MOBILE PHONES OR OTHER ELECTRONIC GADGETS ARE TO BE CARRIED TO THE SCHOOL***



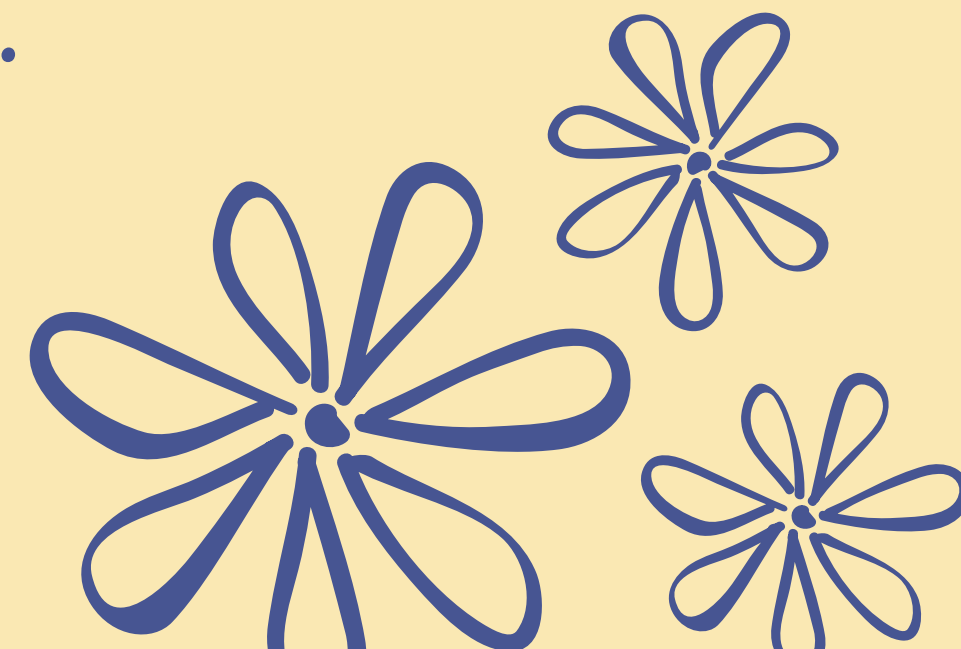
- **Bicycles must be properly locked and kept in the cycle stand. School will not be responsible for the security or damage of the vehicles parked outside the school premises.**
- **Student suffering from any medical conditions, particularly from any contagious disease will not be allowed to attend classes until he or she recovers fully and submits a fitness certificate given by a registered medical practitioner.**
- **Students should actively participate in various co-scholastic activities and community service organized by the school as per the school activity calendar or CBSE Circulars.**
- **All students should bring the school Almanac everyday and wear ID cards.**



- *Visiting clubs, restaurants, shopping malls and theatres in school uniform is strictly forbidden, so is loitering around outside the school after school hours.*
- *Posting of photographs wearing school uniform by any student in social media, without permission from the school authorities, is strictly prohibited. If any such activity is observed, strict action will be taken against the offending student.*
- *Bullying and the use of foul languages are punishable offence. Strict disciplinary action will be taken against students indulging in the same.*
- *Bursting of crackers or splashing colours inside the school premises is strictly prohibited.*
- *Replacement of a school Almanac is done on payment of ₹70/- at the school office.*
- *The school does not collect any money without a valid receipt.*



Estd. 1966





Estd. 1966

GUIDELINES FOR PARENTS / GUARDIANS

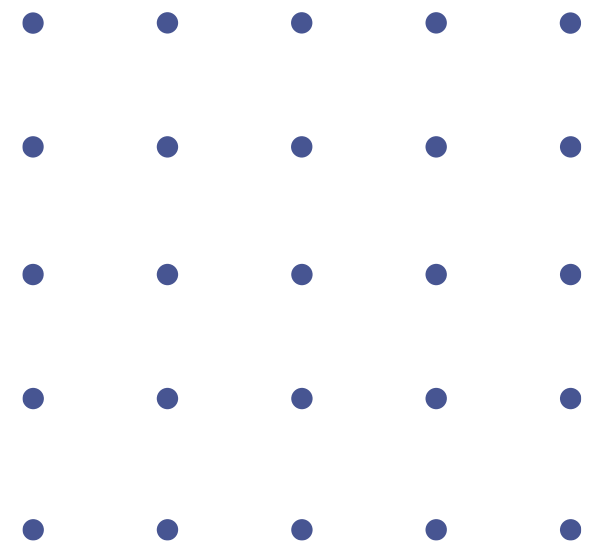


- *Parents are requested to visit the school website www.bdmi.org, for all necessary information regarding school activities.*
- *Any important communication from the parent / guardian should be addressed to the Principal through the Class Teacher.*
- *Kindly sign the attendance record of your ward in the school Almanac to keep a track of your ward's regularity in the school. In case of your ward's shortage of attendance, undertaking has to be signed.*
- *The school shall be mailing in case your ward falls short of 75% attendance, parents are to take cognizance of the same and take appropriate action.*

- *You are expected to fill up the Fee Record Page in the school Almanac.*
- *The school discourages parents from taking their wards for a holiday or a long vacation during the school term.*
- *Parents are discouraged from sending their wards for private tuition. Remedial classes and Improvement Tests are conducted by the school on a regular basis in order to ensure improvement of performance of the slow learners.*
- *We understand that you are happy to allow the school to use the photographs/video clips of your ward for the purpose of publicity, admission, activities & advertisement. Incase, you have any reservation, please send an application to the school in this regard.*
- *It is mandatory for all parents to fill in page no. 8, 9, 10, 11 & 58 of the school Almanac. They must submit page 8, 9 and 58 to the concerned class teacher.*



SCHOOL TIMING

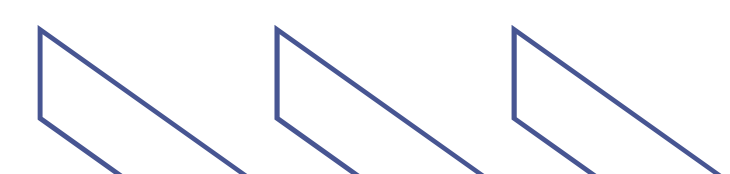


- ❖ Reporting time: 6:55 am
- ❖ Assembly: 7 am
- ❖ School gate closes at: 7:10 am
- ❖ Dispersal :
 - XI (Science)- 12:45 pm
 - XI (Humanities / Commerce / FMM) - 11:35 am
- Late attendance rule: Late arrival to school is not allowed. Parents / Guardians are to check the late attendance page of the school Almanac (Page 43 and 44) regularly and put their signature against the late entry record (if any) of their ward. Arriving late to school for more than 2 days in a month will result in sending the student back to his / her home.
- School never allows any student to overstay without the consent of parents / guardians

B.D.M.I. FOCUSES ON MENTAL HEALTH AND WELL-BEING OF THE STUDENTS



- 'Counselling sessions are provided to the students as per their requirements.
- Both individual and group sessions are conducted as needed.
- Parents can refer their wards for counselling by filling up a referral form which they can obtain from the respective Class Teachers.
- Parents of CWSN candidates are requested to inform the school about the problems / disabilities of their ward. Such information must be supported by valid medical documents, such that the case can be forwarded to the CBSE for seeking permission to award additional facilities or assistance to their ward.



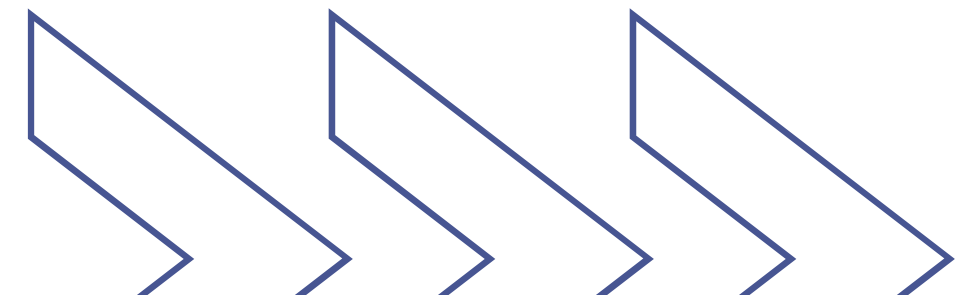


Manjulika Das
Special Educator



Anuja Roy
School Counsellor

- **Better Concentration**
- **Improved Relationships**
- **Improved Sleep Quality**
- **Academic Achievements**
- **Self-Confidence**
- **Lower Anxiety**
- **Stronger Social Skills**
- **Reduced Risk of Depression**

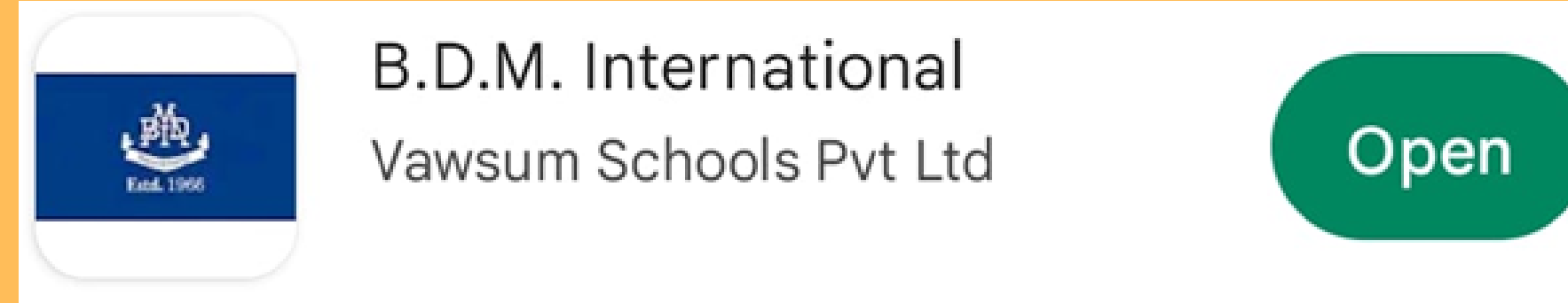




B.D.M. INTERNATIONAL SCHOOL APP

FOR ANDROID USERS

DOWNLOAD B.D.M. INTERNATIONAL APP FROM PLAY STORE



•USER ID AND
PASSWORD WILL BE
SHARED BY THE CLASS
TEACHERS

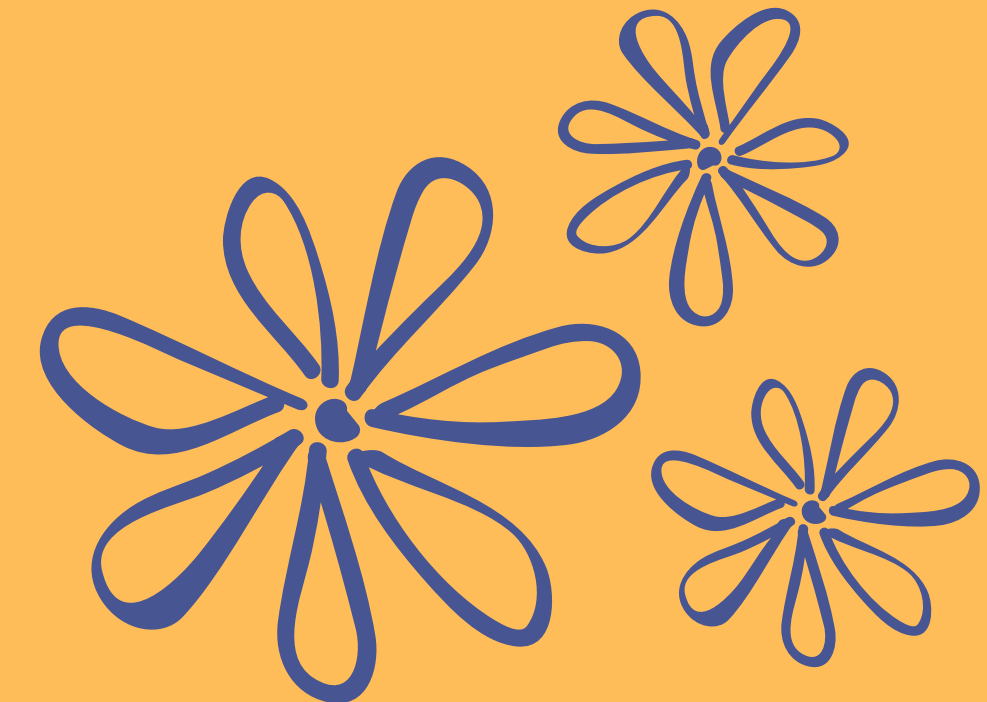
Username

Password

ADD ACCOUNT

[Log In with OTP](#)

Terms & Conditions



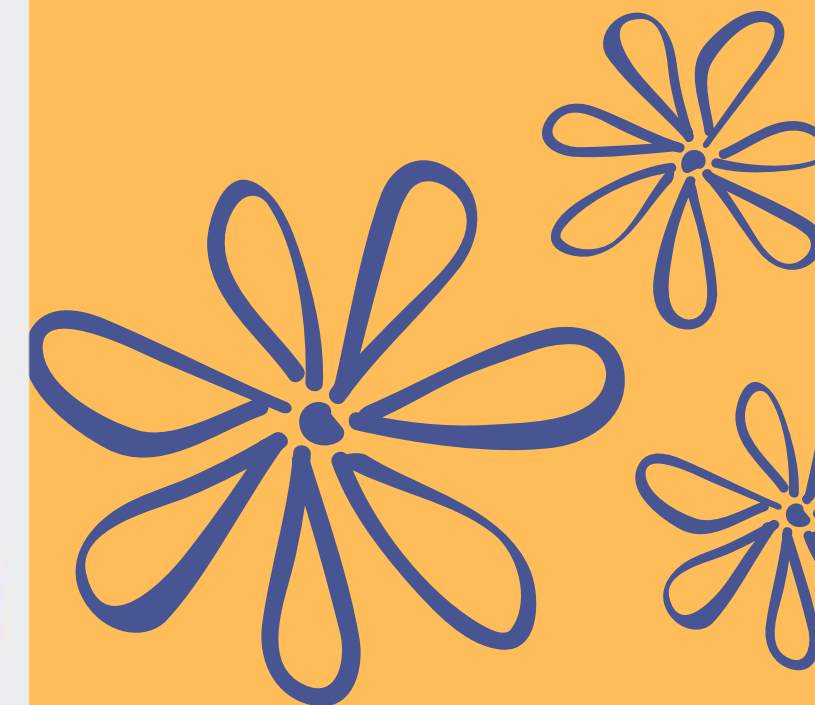
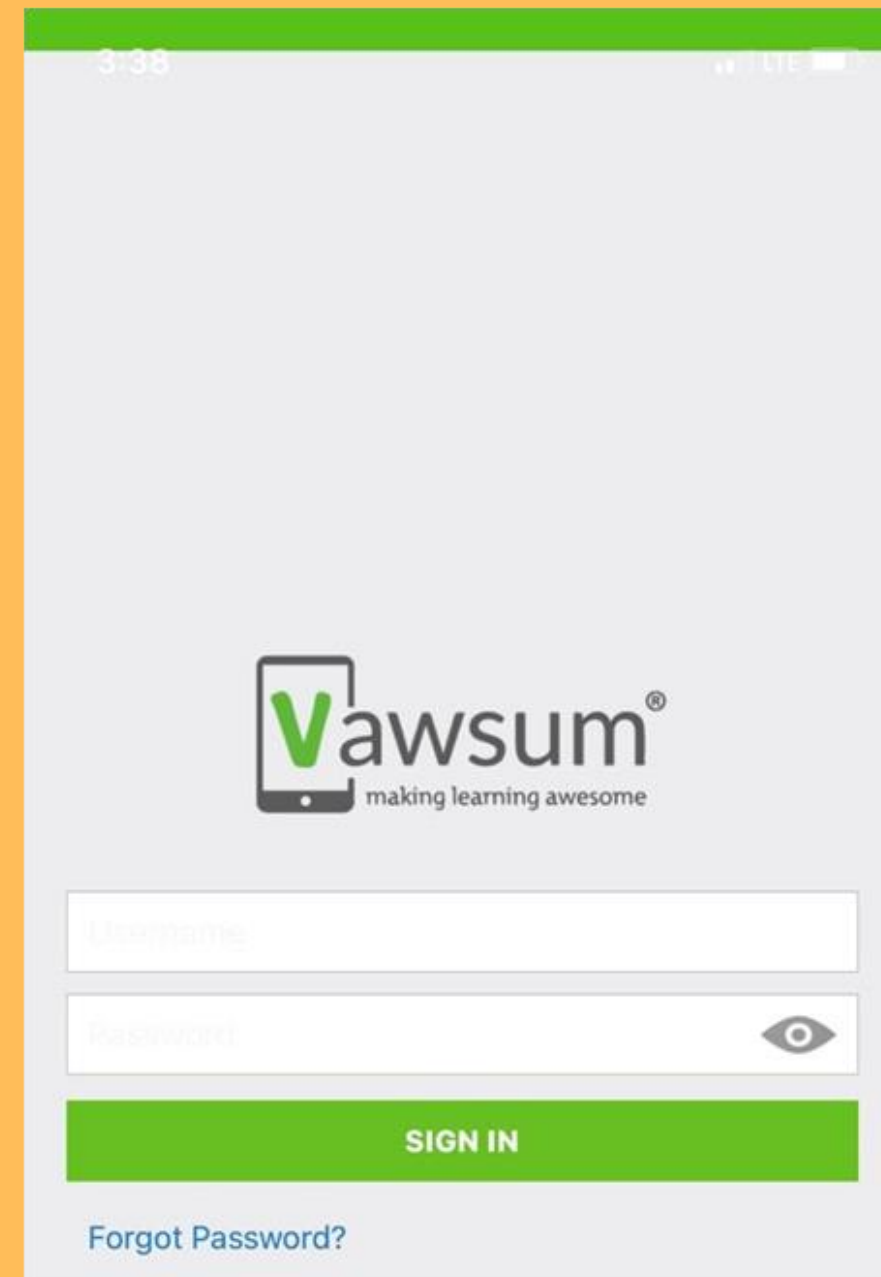
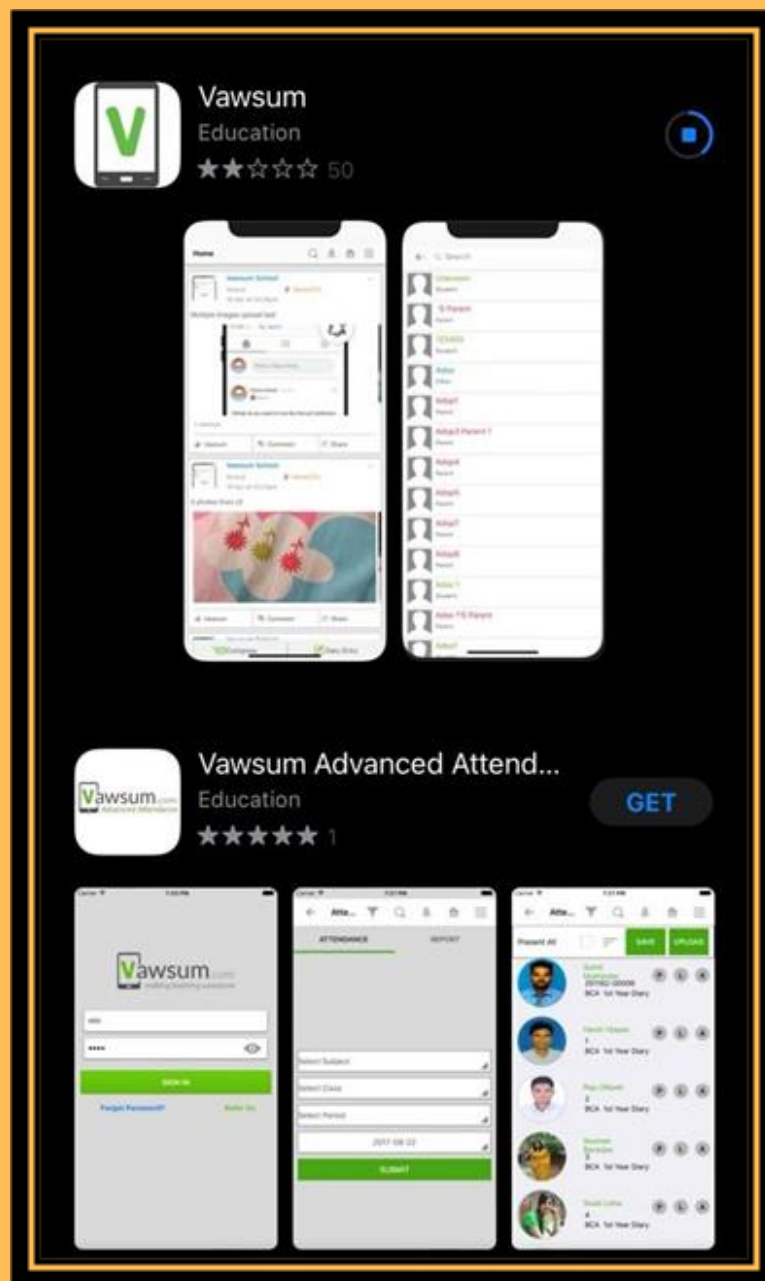


B.D.M. INTERNATIONAL SCHOOL APP

FOR APPLE USERS





• **DOWNLOAD VAWSUM APP FROM THE APPLE STORE**

• **USER ID AND PASSWORD WILL BE SHARED BY THE CLASS TEACHERS**



Information Portal



WEBSITE	www.bdmi.org
 FACEBOOK PAGE	<i>#bdminternational</i>
 INSTAGRAM PAGE	bdm_international
 YOUTUBE	BDM International
 SCHOOL APP	<i>B.D.M. International (Android)</i> <i>Vawsum App (iOS)</i>



Estd. 1966

For Further Queries Please Contact

Principal: principal@bdmi.org

Senior Coordinator: senior.coordinator@bdmi.org



Estd. 1966

**THANK
YOU**